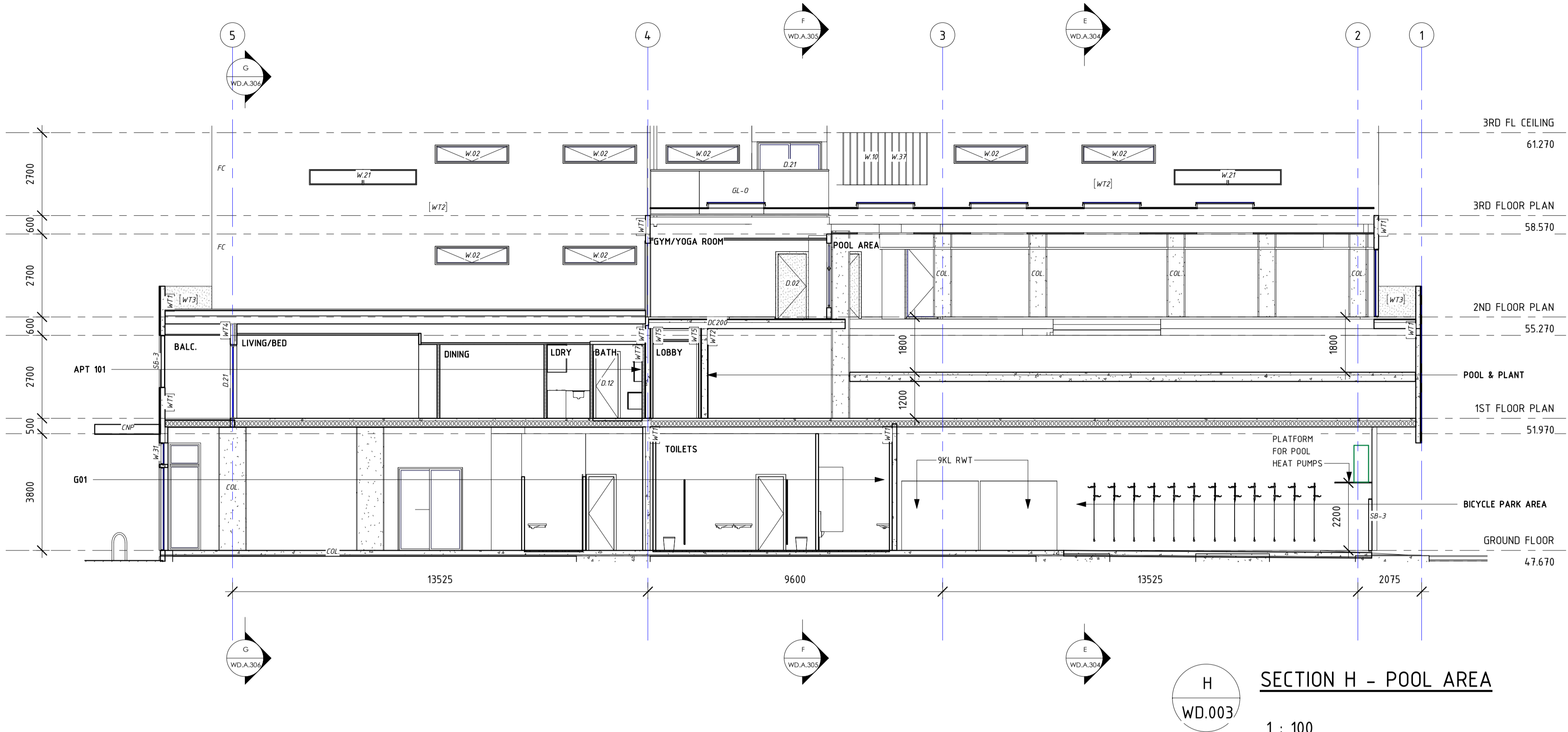


KEY	
KEY	DESCRIPTION
AC	AIR CONDITIONING CONDENSER. WHERE ON BALCONY CONCEAL IN FULL HEIGHT VENTILATION CUPBOARD WITH LOUVRE DOORS.
BIR	BUILT IN ROBE
BL	BOLLARD
BR	BROOM/TALL CUPBOARD
BW	STEEL FRAMED BALUSTRADE WALL - SHS COLUMNS AND BEAMS CLAD WITH PREFINISHED CFC SHEETING. SB-2 FIXED ATOP BW
CH	TRIPLE WASTE CHUTE SYSTEM
CJ	CONSTRUCTION JOINT
COL	STRUCTURAL CONCRETE COLUMN TO ENG'S DTLS
CT	COOKTOP (GAS)
D#	DOOR. REFER DOOR TYPE SCHEDULE WD.A.601 FOR DTLS OF DOOR TYPES
DC200	90/90/90 FRL. REFER ENG'S DTLS. REFER ACOUSTIC ASSESSMENT BY VIPAC FOR UNDERLAY AND INSULATION REQUIREMENTS
DC250	120/120/120 FRL. REFER ENG'S DTLS. REFER ACOUSTIC ASSESSMENT BY VIPAC FOR UNDERLAY AND INSULATION REQUIREMENTS
DM	DOORMAT
DR	MACHINE DRYER SPACE
DW	DISHWASHER
ECR	ELECTRICAL & COMMUNICATIONS RISER CUPBOARD
FC	FEATURE ARCHITECTURAL COLUMN TO ENG'S DTLS
FH	FIRE HYDRANT RISER
FIP	FIRE INDICATOR PANEL
FT	FLOOR TRAP
FTR	FASCIA TRUSS TO ENG'S DTLS
GA	IN-GROUND GREASE ARRESTOR
GL	GLASS FULLY FRAMED BALUSTRADE TO 1050mm AFL. HARKK VIEW SYSTEM OR SIMILAR
GL-O	OPAQUE GLAZED BALUSTRADE - HARKK PRIVACY WITH HANDRAIL SYSTEM OR SIMILAR
HR	50mm HANDRAIL IN STAIR FIXED TO CENTRAL PRECAST WALL. HEIGHT MIN 865mm ABOVE NOSING.
HR-L	50mm HANDRAIL AND BALUSTRADE IN STAIR ON LANDING. HEIGHT MIN 1000mm ABOVE FFL.
L	LINEN CUPBOARD
LD	LINEAR DRAIN
LVR	VERTICAL PRIVACY LOUVRE AS PER DTLS ON WINDOW SCHEDULE WD.A.600
MSB	MAIN SWITCH BOARD
NBN	NBN/DATA CABINET
OBS	OVER BONNET STORAGE UNIT - 1000mm CLEAR - 1000h x 2400w x 810d (TOTAL HEIGHT 2320)
OF	OVERFLOW DEVICE AS DETAILED IN BOX GUTTER TABLE
P	PANTRY CUPBOARD
PC-B	PRECAST CONCRETE PIGMENTED TO DARK GREY COLOUR TO SELECTION
PC-N	PRECAST CONCRETE WITH NO PIGMENT - NATURAL
PC-W	PRECAST CONCRETE PIGMENTED TO OFF-WHITE COLOUR TO SELECTION
PJ	PANEL JOINT - REFER ENG'S DWGS FOR DTLS
PL	GRC PLANTER BOX. MIN HEIGHT 800mm AFL W. NO FOOTHOLDS
R	REFRIGERATOR SPACE
RC	RECESSED CEILING AT DOORS AND WINDOWS FOR CONCEALED CURTAIN TRACK OR BLIND PELMET
RH	RANGEHOOD WITH DUCTING TO OUTSIDE
RWT	RAINWATER TANK - REFER CIVIL PLANS FOR DTLS
SB-1	100mm WIDE HORIZONTAL FLAT STEEL BALUSTRADE TO INTERNAL WALKWAYS. 1050mm AFL
SB-2	STEEL FRAMED BALUSTRADE ATOP "BW" TO WEST ELEVATION - SEE SECTION DETAIL "BALCONY EDGE - WEST" FOR DETAILS. 600h FOR A TOTAL BALUSTRADE HEIGHT OF 1600mm AFL
SB-3	100mm WIDE VERTICAL FLAT STEEL SCREEN TO EAST FACING FIRST FLOOR BALCONIES. 700w x 1700h
SHS	SHS COLUMN TO ENG'S DTLS
ST	FEATURE STEEL COLUMNS TO ENG'S DTLS
TGSI	TACTILE GROUND SURFACE INDICATORS INSTALLED IN ACCORDANCE WITH D38 OF BCA & AS 1428.4.1
UBO	UNDER BENCH OVEN
W#	WINDOW. REFER WINDOW TYPE SCHEDULE WD.A.600 FOR DTLS OF WINDOW TYPES.
WASTE	WASTE CHUTE IN RISER, FIRE RATED TO 1HR. HOPPER DOORS 1HR FIRE RATING
WIR	WALK IN ROBE
WM	WASHING MACHINE SPACE WITH FLOOR TRAP UNDER AND TAPS
WO	WALL OVEN
WS	WHEEL STOP TO CIVIL DTLS



WALL SCHEDULE					
TAG	CONSTRUCTION	FINISH	FRL	INSULATION	ACOUSTIC
WT1	150mm PRECAST CONCRETE PANEL	STANDARD GREY INTERNALLY, REFER ELEVATIONS FOR EXTERNAL CONCRETE COLOURS	120/120/120	REFER TO WT5 OR WT6 FOR WALL INSULATION WHERE APPLICABLE	Rw 50 + Rw + Ctr 50 IF NO LINING. REFER TO WT5 OR WT6 FOR SOU APPLICATIONS
WT2	200mm PRECAST CONCRETE PANEL	STANDARD GREY INTERNALLY, REFER ELEVATIONS FOR EXTERNAL CONCRETE COLOURS	180/180/180	REFER TO WT5 OR WT6 FOR WALL INSULATION WHERE APPLICABLE	Rw 50 + Rw + Ctr 50 IF NO LINING. REFER TO WT5 OR WT6 FOR SOU APPLICATIONS
WT3	100mm PRECAST CONCRETE PANEL	STANDARD GREY INTERNALLY, REFER ELEVATIONS FOR EXTERNAL CONCRETE COLOURS	90/90/90	REFER TO WT5 OR WT6 FOR WALL INSULATION WHERE APPLICABLE	NA
WT4	HEBEL WALL (NON-LOADBEARING) - STEEL FRAMED. 75mm HEBEL 50mm TOP HAT, 92mm STEEL STUD. 2 LAYERS 16mm FYRCHECK PLASTERBOARD FINISH INTERNALLY.	FLUSHED & PAINTED. HEBEL RENDERED AND PAINTED TO 3 COAT SYSTEM	90/90/90	90mm R25 BRADFORD GW NON-COMBUSTIBLE INSULATION WITHIN 92mm STEEL STUD. FOIL BACKED SISILATION FIXED TO STEEL STUDS.	Rw 50 & Rw + Ctr 50
WT5	64mm STEEL STUDS AT 600mm MAX CTS. TO WT1 OR WT2 PARTYWALLS AND EXTERNAL WALLS. 25mm CAVITY (DISCONTINUOUS CONSTRUCTION)	LINE WITH 10mm PLASTERBOARD. FLUSH & PAINT TYP.	---/---/---	90mm R25 BRADFORD GW NON-COMBUSTIBLE INSULATION BATTS	WHEN COMBINING WT1 OR WT2 WITH WT5 AND 25mm CAVITY, Rw 50 AND Rw + Ctr 50 ACHIEVED
WT6	92mm STEEL STUDS AT MAX 600mm CTS. USED FOR INTERNAL WALLS.	LINE WITH 10mm PLASTERBOARD. FLUSH & PAINT TYP.	---/---/---	R20 BRADFORD GW NON-COMBUSTIBLE INSULATION BATTS TO INTERNAL WALLS. WITHIN SOUs	NA
WT6a	92mm STEEL STUDS AT MAX 600mm CTS. USED FOR INTERNAL WALLS. LINE BOTH SIDES WITH 16mm FYRCHECK PLASTERBOARD.	FLUSH AND PAINT TYP.	---/60/60	R20 BRADFORD GW NON-COMBUSTIBLE INSULATION BATTS.	NA
WT7	92mm STEEL STUDS AT MAX 450mm CTS. FOR BATHROOM & LAUNDRY PODS.	LINE W. AQUACHECK PLASTERBOARD. WATERPROOF & TILE AS PER SPECIFICATIONS	---/---/---	R20 GW INSULATION BATTS (11kg/m³)	NA
WT8	LIGHTWEIGHT PARTYWALL. CSR1385. TWO ROWS OF 64mm STEEL STUDS WITH 20mm CAVITY. ONE LAYER OF 16mm FYRCHECK TO BOTH SIDES OF WALL	FLUSH AND PAINT TYP.	90/90/90	75mm R17 GW ACOUSTIGARD NON-COMBUSTIBLE TO BOTH STUDS	Rw 59 & Rw + Ctr 50
WT8a	LIGHTWEIGHT PARTYWALL. CSR1385. TWO ROWS OF 64mm STEEL STUDS WITH 80mm CAVITY. ONE LAYER OF 16mm FYRCHECK TO BOTH SIDES OF WALL	FLUSH AND PAINT TYP.	90/90/90	75mm R17 GW ACOUSTIGARD NON-COMBUSTIBLE TO BOTH STUDS	Rw 59 & Rw + Ctr 50
WT9	LIGHTWEIGHT EXTERNAL WALL. INTERNAL WALKWAYS). CSR1385 AT PER WT8 CONSTRUCTION WITH 6mm FIBRE CEMENT SHEETS ON 35mm TOP HATS EXTERNALLY	RENDER AND PAINT EXTERNALLY.	90/90/90	75mm R17 GW ACOUSTIGARD NON-COMBUSTIBLE TO BOTH STUDS	Rw 59 & Rw + Ctr 50
WT10	2100h FENCING	GOOD NEIGHBOUR	---/---/---	NA	NA
WT11	600mm PILES WITH 100mm SHOTCRETE INTERNALLY		180/180/180	NA	NA
WT12	SELECTED BLUESTONE TILE FIXED TO PRECAST WALL TO MANUF. DTLS		---/---/---	NA	NA
WT13	110mm FIRE RATED COMMON BRICK WALL	WHERE USED INTERNALLY, LINE WITH 10mm PLASTERBOARD - FLUSH & PAINT TYP.	90/90/90	NA	NA

REVISIONS		
ISSUE #	DATE	DESCRIPTION
A	25/03/2019	FOR BRC APPROVAL
B	14/05/2019	REVISED SET BASED ON BRC RFI PC59515

This drawing shows design modifications incorporated by Gemma and Lea in response to comments received from the Council. It is a revision to the original drawing and should be used in conjunction with the original drawing and any other relevant documents. It is not to be used for construction purposes unless specifically approved by the Council.

PROJECT ADDRESS  
248 UNLEY ROAD HYDE PARK  
  
HYDE PARK PLACE - STAGE A

CLIENT  
HYDE PARK PLACE PTY LTD



SHEET  
SECTION H

WD.A.307

AUTHOR  
GB

CURRENT REVISION  
REVISED SET BASED ON  
BRC RFI PC59515

ISSUE DATE  
29/06/2019  
  
FOR TENDER



www.gemmaleale.com.au  
gemma@gemmaleale.com.au  
08 9502 3911 538